

MDM Enrollment

On your iPad open Safari. Go to www.algonac.k12.mi.us .



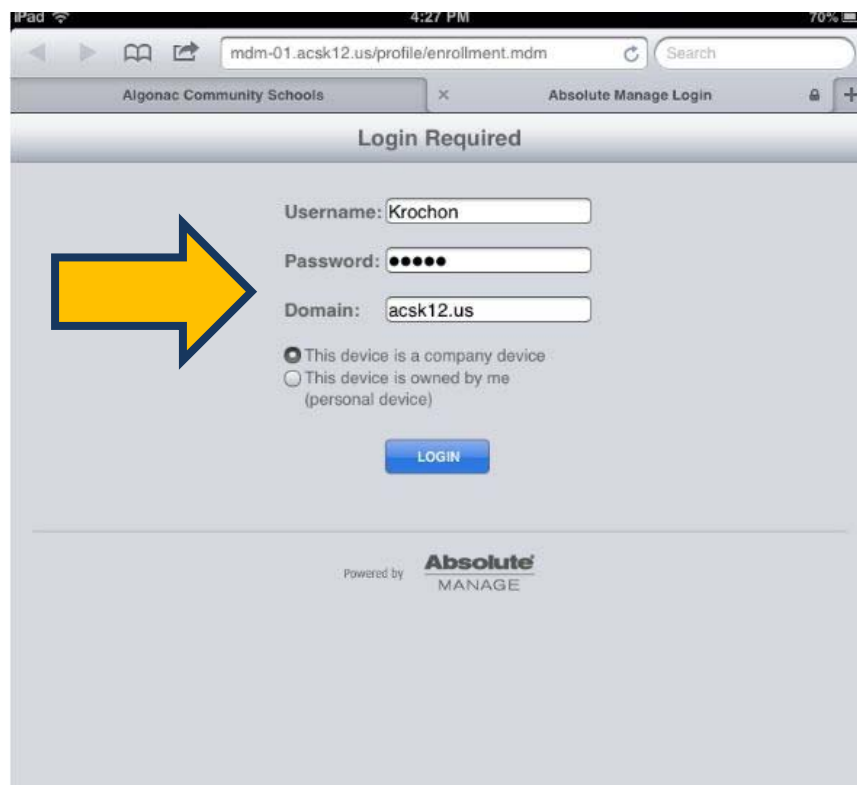
On the top navigation bar tap “Services”. A drop down menu will appear. Tap Technology.



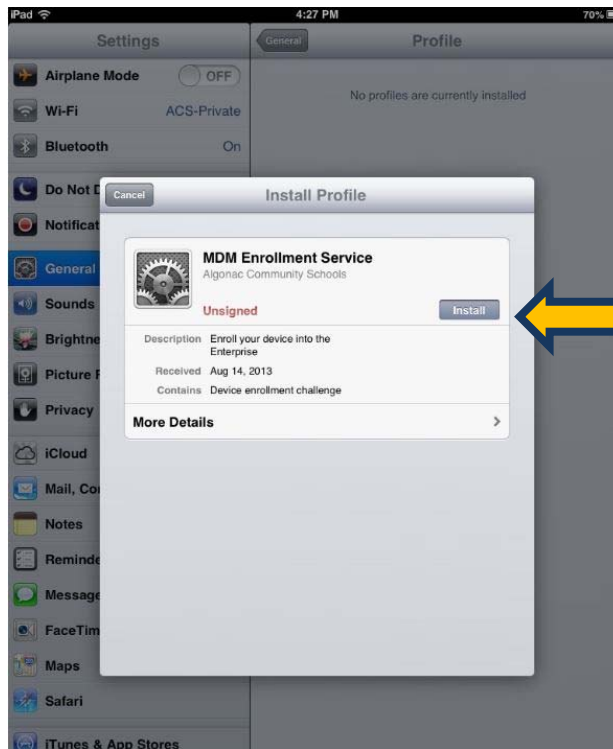
On the technology page tap on “iPad Enrollment” which is located under “Links” on the right hand side of the page.



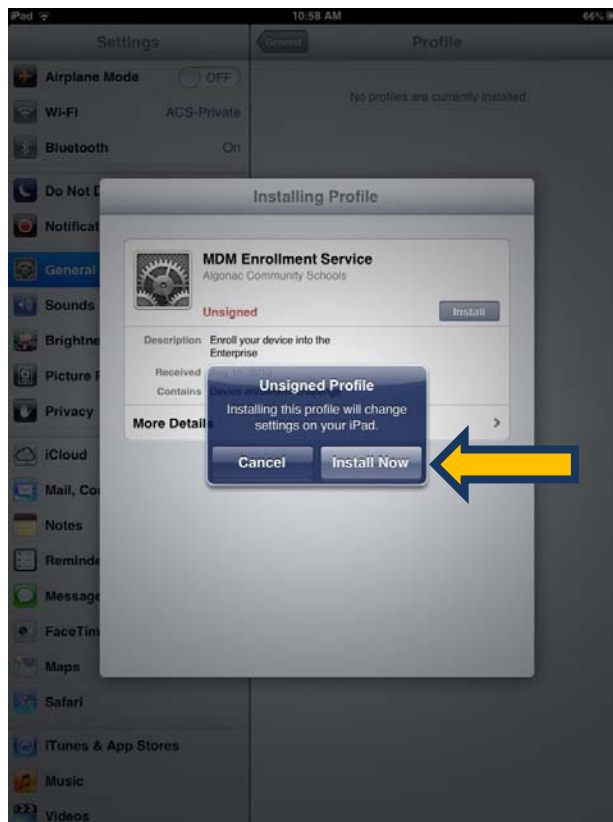
Enter your active directory username and password (what you use to log into a school computer) and under Domain: put “**acsk12.us**”. Tap on the radio button in front of “This device is a company device”. Once the data has been entered tap “Login”



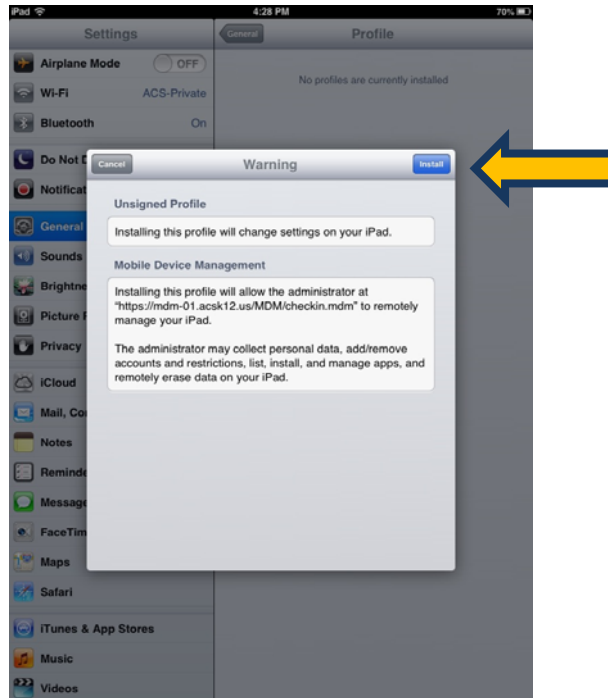
On the Install Profile page tap the “Install” button.



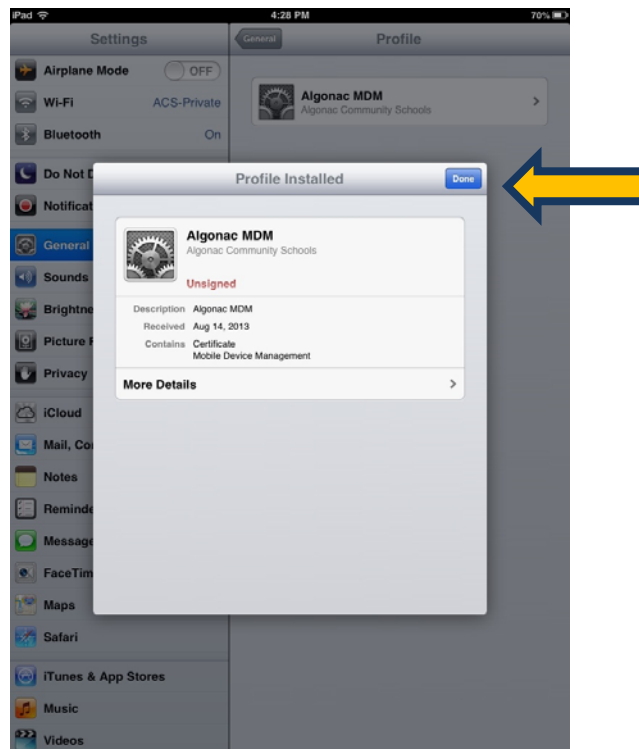
When the “Unsigned Profile” box appears tap the “Install Now” button.



A warning screen will appear. Tap on “Install”



On the Profile Installed screen tap on “Done”



You will now be on a grey screen with a message at the top saying “Your device is being enrolled”. Just close your browser you are done!

